

PRICE COUNTY WISCONSIN

WISCONSIN
Life's So Good
www.pricecountywi.net

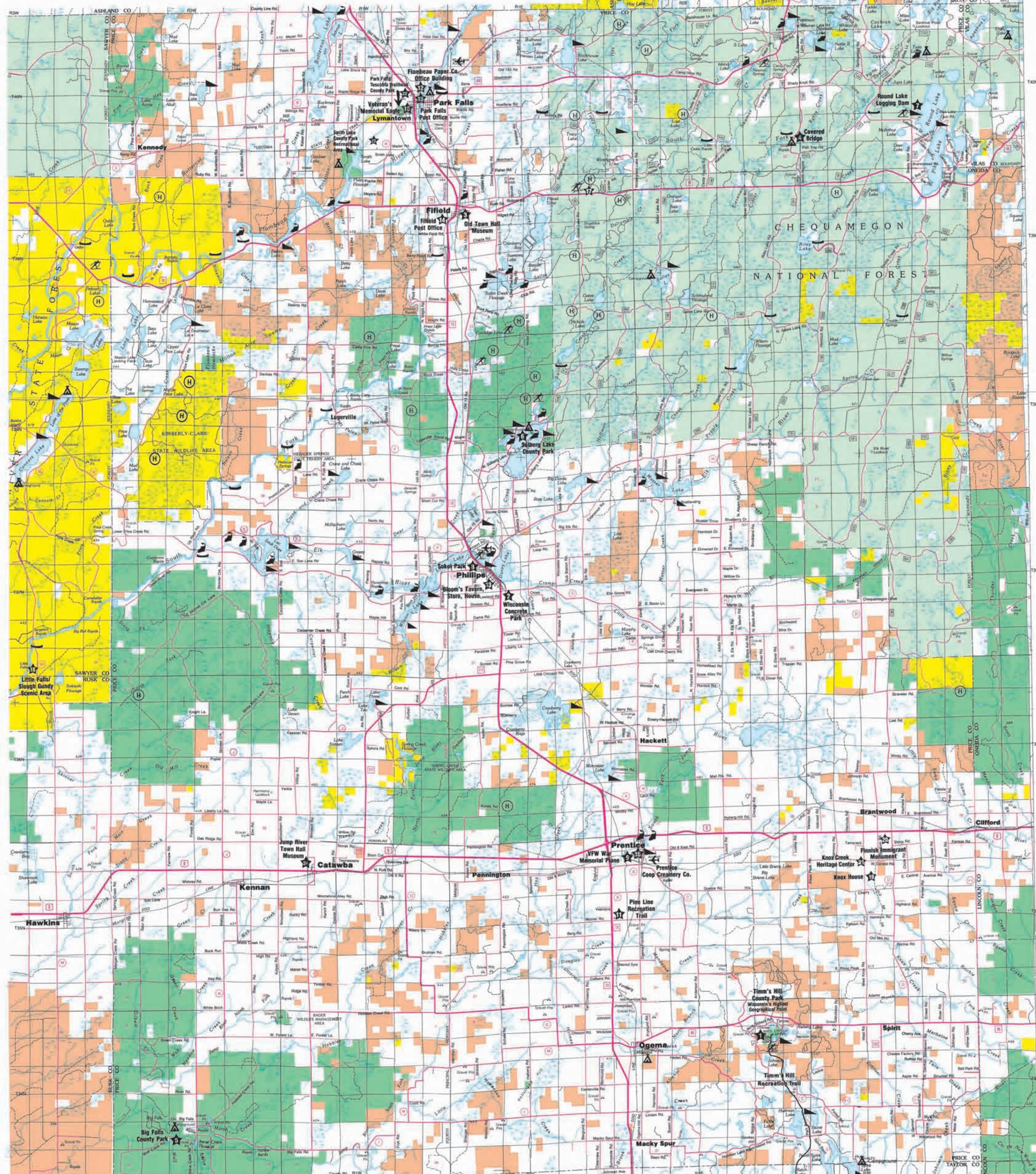
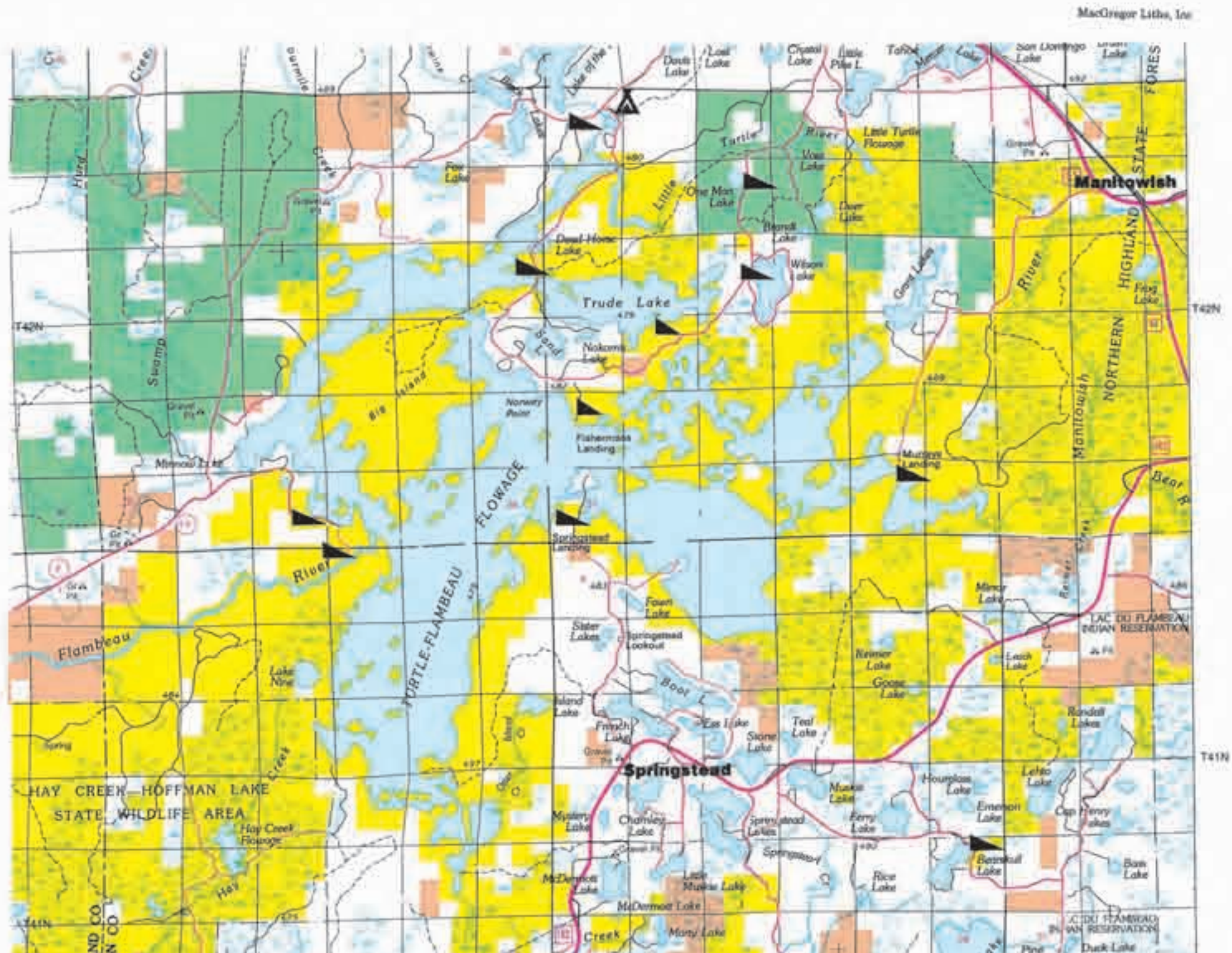
Recreation &
Auto Tour Map
800-269-4505
www.pricecountywi.net

800-269-4505

- ### Legend
- Hunter Walking Trails
 - Ski Trails
 - Shore Fishing
 - Public Campgrounds
 - Scenic/Cultural Attractions
 - Boat Landing
 - Canoe Landing
 - Airports
- Lands Open for Public Recreation**
- Chequamegon Nicolet National Forest
 - County Forest Land
 - State of Wisconsin
 - Private/Industrial Managed Forest Lands
 - Trout Streams

PLEASE NOTE:
Much care was taken to maintain a high degree of accuracy with regard to lands open to public use. However, 100% accuracy is not implied. If in doubt as to whether specific lands are open to the public, consult a county plat book.

9TH EDITION • 2008 • PRODUCED BY PRICE COUNTY TOURISM
PHILLIPS, WISCONSIN 54555 • 800-269-4505
www.pricecountywi.net





www.pricecountywisc.com

SCENIC AND CULTURAL ATTRACTIONS

- Timm's Hill County Park—highest point in Wisconsin (1951.5 feet)
Wisconsin Concrete County Park—concrete sculptures of folk artist Fred Smith
Old Town Hall Museum—Price County Historical Society
Smith Rapids Covered Bridge—Town Lattice covered bridge
Big Falls County Park—scenic point on the Jump River
Solberg Lake County Park—all-purpose recreational area
Round Lake Logging Dam—restoration of 1878 logging dam
Lidice Memorial—Sokol Park, Phillips
VFW War Memorial Plane—Railroad and South Streets, Prentice
Veteran's Memorial Eagle—Highway 13, Park Falls
Price-Taylor Rail Trail - "The Pine Line"—multi-use rail corridor with trail access point in Prentice
Flambeau River Paper Co. Office Building—National Register of Historic Places, downtown Park Falls
Bloom's Tavern, Store, and House—National Register of Historic Places, Avon Avenue, Phillips
Fifield Post Office—National Register of Historic Places, downtown Fifield
Park Falls Post Office—National Register of Historic Places, downtown Park Falls; John Watrous river drive mural
Prentice Co-op Creamery Co.—National Register of Historic Places, 1319 Town Street, Prentice
Fifield Fire Lookout Tower—circa 1932
Little Falls/Slough Gundy—Flambeau River State Forest
Knox House—Original Finnish log home built in 1898 by Matt Johnson
Finnish Immigrant Monument dedicated in 1990 to Finnish settlers who immigrated at the turn of the century
Knox Creek Heritage Center—logging camp display
Tuscolob State Trail—Multi-Use Recreation Trail
Smith Lake County Park—Recreational Area
Jump River Town Hall Museum—Historical Museum

BIKING

Price County has a variety of roads that are suitable for day tours, weekend excursions or just short rides. Most routes offer a variety of terrain types ranging from flat lake side roads to rolling hills. Most of Price County's secondary roads are lightly traveled by motor vehicles offering excellent riding conditions.

RECOMMENDED BIKE & AUTO TOURS

PRENTICE/PHILLIPS (27 miles round trip): Take County A north out of Prentice. Turn right on County K and travel north. Turn left on Little Chicago Road and continue until the intersection with Highway 13. Ride north about 2.5 miles to Wisconsin Concrete County Park where you can rest and enjoy the unique artwork of Fred Smith. Continue into the city of Phillips to enjoy a full host of services and attractions. After your visit, head south on Highway 13 and turn left on County D. Travel on County D and turn right on County K, heading back to Prentice via County K and County A. County A takes you into downtown Prentice, where the trail head for the "The Pine Line" is nearby. Enjoy the wide variety of picnic areas and services available throughout Prentice.

SMITH RAPIDS BRIDGE/ROUND LAKE DAM (17 miles round trip): Start your trip at the Smith Rapids Campground. Head north on Forest Road 148. Turn right on Forest Road 144. Continue through the scenic beauty of the Chequamegon Nicolet National Forest where you will find the Round Lake Logging Dam. Continue south on Forest Road 144 to Highway 70. Turn right on Highway 70 for four miles. Complete your trip by turning north on Forest Road 148 (Smith Rapids Road).

OGEMA/CATAWBA (18 miles one way): Beginning Ogema, head west on Highway 96, Cross Highway 13 and follow County O eight miles to Hobbies Creek Road. Proceed on Hobbies Creek Road to the intersection of County I where you can observe woolly Scotch Highland beef cattle in the pasture. Turn right on County I and enter Catawba. There are grocery, hardware, and convenience services there. You can complete your tour by turning back south on County I one-half mile. Turn right on Midway Road and arrive in Kennan, gateway to Big Falls County Park.

KENNA/BIG FALLS (10 miles one way): Start the ride in Kennan, south of Highway 8 on County N. There is a general store in Kennan. Continue south on County N past Kennan Park through rolling farm land until you reach the intersection of Big Falls Road. Turn right into the park. The park features rustic campsites and a beautiful stretch of rapids on the Jump River.

PRENTICE/OGEMA (25 miles round trip): Start your trip in the village of Prentice. Follow County C south where you will experience a breathtaking view of Timm's Hill. After spending time at Timm's Hill County Park, take County C back to the intersection of Highway 86. Turn left on Highway 86 into Ogema. Bikers can catch the Price-Taylor Rail Trail north to Prentice OR- stay on County C after leaving the park and retrace your route back to Prentice. Autos may return to Prentice from Ogema on Highway 13.

PHILLIPS/MUSSER LAKE (25 miles round trip): Starting in Phillips travel south out of town to County D. Turn left on County D through farm and forest land. A restored schoolhouse/bead shop can be visited along this stretch of roadway. Turn north at the intersection of County H and proceed to Musser Drive. Turn west on Musser Flowage area. Continue until you gain reach County H. Turn left and follow County H along the Elk River into Phillips. Phillips provides full food, lodging and supply services.

PHILLIPS/SOOL LAKE (24 miles round trip): From Phillips, travel west on County W through the scenic Phillips chain of lakes region. After passing Soo Lake, turn right on County S and continue around the lake north and east. At the intersection of County F, turn right and continue into Phillips, now viewing portions of the Phillips chain from the opposite side.

PHILLIPS/SOLBERG LAKE (20 miles round trip): Leave Phillips on County H east to Solberg Lake Road. Follow the road around the entire lake until you find the Solberg Lake County Park sign. This park is an all-purpose recreation area including a sand beach, picnic areas, observation tower and fishing pier, and a nature trail. After leaving the park, turn left onto Solberg Lake Road and meet the intersection of Old 13 Road. Turn left and return to Phillips.

OGEMA/TIMM'S HILL (20 miles round trip): This trip begins by heading east on Highway 86 out of Ogema on rolling hills. Turn south on County C to County RR. The park at Timm's Hill offers a beautiful climb to the observation tower and the picturesque vista of the country-side surrounding the highest point in Wisconsin. Continue the ride by returning to County C. Go south to County YY. YY will join Highway 102. Continue on Highway 102 to Spirit. At Spirit, turn left on Highway 86 and return to Ogema.

PARK FALLS/OXBO (40 miles round trip): Take County B south out of Park Falls to Highway 70. Ride west on Highway 70 along the beautiful North Fork of the Flambeau River. Rest at the wayside at Oxbo and enjoy the river. Continue west until the intersection of Highway EE. Turn right and head back to Park Falls for a wide variety of services for the traveler.

PARK FALLS/TURTLE-FLAMBEAU FLOWAGE (32 miles round trip): Start your trip heading north out of Park Falls on Agenda Road. Turn right on North River Road. Enjoy the scenic tour along the banks of the Flambeau River. Turn right on Creamery Road and follow it to the intersection of County F. Turn right and continue on County F as it enters Iron County. The Flowage is about two miles past the county line. The Turtle-Flambeau Flowage is the "Crown Jewel of the North", resembling the Boundary Waters region of Northern Minnesota and Canada. Travelers will find a variety of services along the shore of the vast waterway. After your visit, retrace your route back to Park Falls.

MOUNTAIN BIKE TRAILS

There are several sking and hunter-walking trails in Price County that offer excellent off road bicycling opportunities. These trails are closed to motorized vehicles. In addition, there are hundreds of miles of logging roads in the county forests and the Chequamegon Nicolet National Forest. The Flambeau Hills Skiing and Hiking Trail in Price County, Wisconsin State Forest is also available to bicyclists. A parking sticker is required to your vehicle. In the southeastern corner of the county the Timm's Hill National Scenic Trail offers some challenging trail bike riding as it winds its way to the Ice Age Trail south of the county line near Rib Lake. See the map for locations of the skiing and hunter-walking trails in Price County.

CANOE & KAYAK TRIPS

The North and South Forks of the Flambeau River offer excellent canoeing for all ... novice to expert. Scenic beauty, good fishing, wildlife and adventure are awaiting you on the river. With moderate paddling it is easy to average three or four miles per hour. Many campsites are available for longer trips. Look on the map and decide which trip you would like to try. Detailed map of the rivers are available at www.paddletflambeau.com

ATV TRAILS

- Flambeau Trails - Chequamegon Nicolet National Forest - East of Park Falls - 70 miles
Dead Horse Run - Chequamegon Nicolet National Forest - West of Park Falls - 56 miles
Pine Line Trail - Winter Use only - trailheads in Prentice and Medford - 26 miles
Flambeau Hills Trail - West of Phillips - Flambeau River State Forest - 38 miles
Tuscolob State Trail - West of Park Falls - 62 miles

PRICE COUNTY FISHING

DNR MUSKELLUNGE STOCKING - Price County table with columns for Water, Year, and Stocking amounts for various lakes like Butternut Lake, Daniels Lake, Deer Lake, etc.

DNR MUSKELLUNGE STOCKING Flambeau River State Forest Area table with columns for Water, Year, and Stocking amounts for Lake of the Pines, N.F. Flambeau River, etc.

DNR TROUT STOCKING - Price County table with columns for Water, Species, Year, and Stocking amounts for various creeks and rivers like Brown Trout, Brook Trout, etc.

PRICE COUNTY TROUT STREAMS table with columns for L.D. No., Stream Name, No. Miles, Class, and other details for various streams like Camp Creek, Beaver Creek, etc.

LAKE STURGEON FISHING table listing naturally occurring populations of lake sturgeon in various lakes like Butternut Lake, Flambeau River, etc.

GOOD SHOREFISHING AREAS

- 1. Butternut Lake Fishing Pier T.40N.-R.1W. Section 22
2. Twin Lakes Campground T.40N.-R.2E. Section 11
3. Patterson Lake T.40N.-R.2E. Section 1
4. Camp Four - Newman Springs T.40N.-R.1W. Section 25
5. Lower Dam Tailwaters T.40N.-R.1E. Section 25
6. Sailer Creek Backwaters T.39N.-R.1E. Section 29
7. High Banks - Sailer Creek Flowage T.39N.-R.1E. Section 29
8. Sailer Creek Dam T.39N.-R.1E. Section 7
9. Fifield Dam Tailwaters T.39N.-R.1E. Section 7
10. Preley Dam T.39N.-R.1W. Section 8
11. Six Mile River Landing T.39N.-R.1W. Section 18
12. Crowley Dam Tailwaters T.39N.-R.2W. Section 11
13. Musser Dam T.37N.-R.2E. Section 13
14. Solberg Fishing Pier T.38N.-R.1E. Section 21
15. Disappearing Creek Weiside T.38N.-R.1E. Section 29
16. Elk Lake Handicapped Fishing Pier T.37N.-R.2W. Section 13
17. Long Lake Bridge T.37N.-R.2W. Section 11
18. Weimer's Dam Tailwaters T.37N.-R.2W. Section 11
19. Upper Park Falls Flowage Pier (Hines Park) T.37N.-R.2W. Section 13
20. Prentice Village Pier T.37N.-R.2E. Section 6
21. Newman Lake Fishing Pier T.40N.-R.2E. Section 7
22. Upper Park Falls Flowage Pier (Hines Park) T.40N.-R.2E. Section 7
23. Foulds Springs T.39N.-R.1E. Section 34
24. De Mars Bridge T.40N.-R.1W. Section 13
25. Round Lake Logging Dam T.40N.-R.3E. Section 26

PRICE COUNTY LAKES

Large table listing Price County Lakes with columns for Lake, Acreage, Max. Depth, Public Access, Commercial Facility, Location, Species of Fish, and other details for lakes like Axel, Bass S14 R2W, Bass S32 T3R2W, etc.

PRICE COUNTY AREA HUNTER WALKING TRAILS

Map of Price County Area Hunter Walking Trails showing various trails like Lost Lake Trail, Hackett Hunter Walking Trail, Holy Cross Grouse Management Area, Camp Five Recreation Trails, Rock Creek Recreation Trails, Squaw Creek Trails System, Bear Creek Trail, Wintergreen Recreation Trails, Pelican Lake Trails, Hay Creek Trail, Sailor Creek Trail, Tracy Creek Trail, East Hay Creek Trail, Dalrymple Creek Trail, Popple Creek Wildlife Trail, Schmuland Trail, and Air Photos.

PRICE COUNTY DEER AND BEAR HUNTING

Deer and Bear Hunting statistics including Trophy Deer, Trophy Bear, Deer Management Data, Gun Harvest, Archery Harvest, and Bear Harvest Statistics Statewide.

PRICE COUNTY SNOWSHOEING, SKIING, GOLFING & TENNIS

Price County Area Ski & Snowshoeing Trails, Golf Courses (Park Falls, Prentice), Tennis Courts (Park Falls - Prentice, Phillips - Catawba - Kennan), and Price County Camping information.

EMERGENCY SERVICES & INFORMATION

Emergency Services including Hospital (Flambeau Hospital), Clinics (Marshfield Clinic - Phillips, Prentice Medical Clinic), Fire (Park Falls, Prentice), Police (Park Falls, Phillips), and other emergency contact information.